

TRIANGLE LTD Precast Highway Grid Datasheet



Steel Specifications:

- CE Certified
- BS 4008:2006 and Euro BEN 1991-2 Part 2 compliance
- +120 tonne capacity
- Transverse beam 6mm thick rectangular hollow section
- Hot dip galvanised finish
- Modular 3m, 4m, 5m, 6m, 7m, 8m road width

Comparison

Comparatively, Triangle grid steels are several hundred Kg's heavier than competitor grids. Why is this important? Quite simply, we use significantly heavier sections and there are many advantages for this:

- Extended grid life
- Highly reduced traffic impact noise
- Very high axle loading capacity
- Minimal maintenance

01425
656466



triangleltd.co.uk

Triangle Ltd have installed over 100 precast highway grids in the New Forest alone. We supply nationwide and currently supply Hampshire Highways, Milestone, Amey, Skanska, Wiltshire Council, NFDC, Scotborders.

Precast Concrete Specifications:

- PAV 2 Concrete C40/50 (delivered compressive strength 80-90N/mm²)
- Weight of each base section 9,3 tonne (2 sections per 3-5m grids, 3 sections per 6-8m grids)
- Cast in anchors (no site drilling required)
- Mulseal DP 0611 painted bases

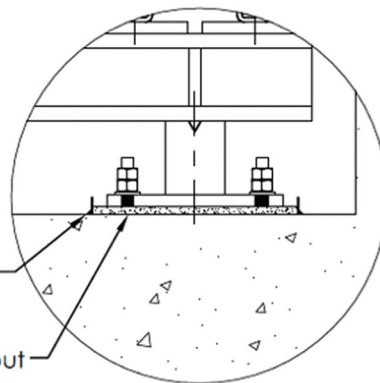


Comparison:

- Triangle precast grids can be installed in 1 week, including breaking out and disposal of existing grid concrete. Site poured concrete requires 6 weeks minimum installation time.
- Precast sections are factory-controlled PAV-2 concrete
- Painted bases prevent ground water ingress
- No site drilling and minimal lifetime maintenance
- 1 week install means the smallest environmental footprint: 88% reduction in emissions
- ✓ No alkaline washout from site poured concrete
- ✓ No formwork or premix concrete waste
- ✓ No toxic mineral release agents
- ✓ Reduced construction noise pollution
- ✓ Less disruption to business and schools

Key Components

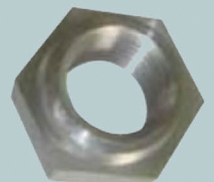
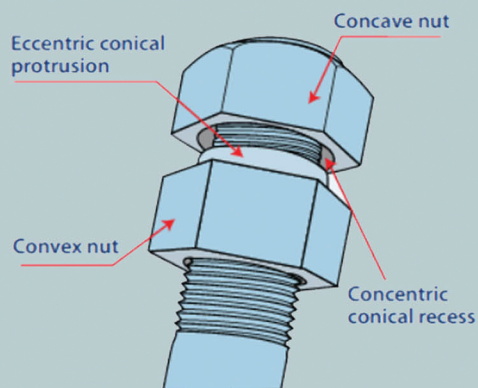
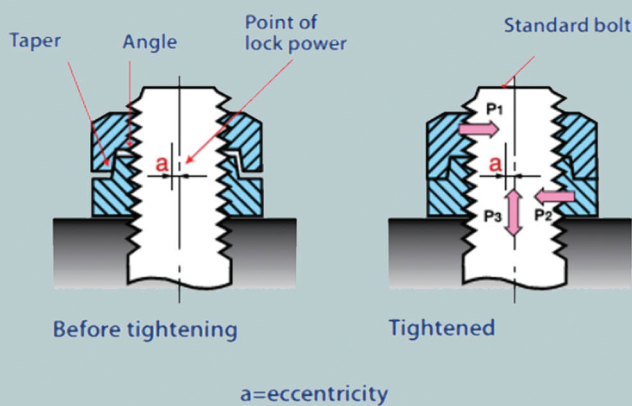
Stanchion Beams
Polyethylene grouting
frames + M20 Staytite locknuts



Grout box sealed with mastic to prevent grout leakage
100 newton cementitious grout

Torque table: Lower Nut
250Nm, upper nut - 180Nm

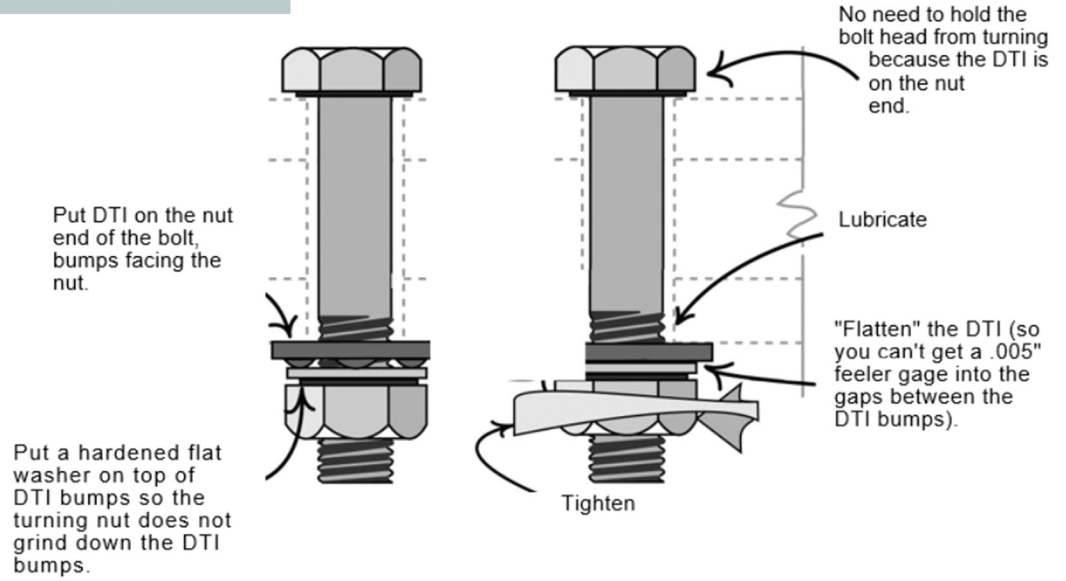
Lock effect - $P_1 + P_2 + P_3$



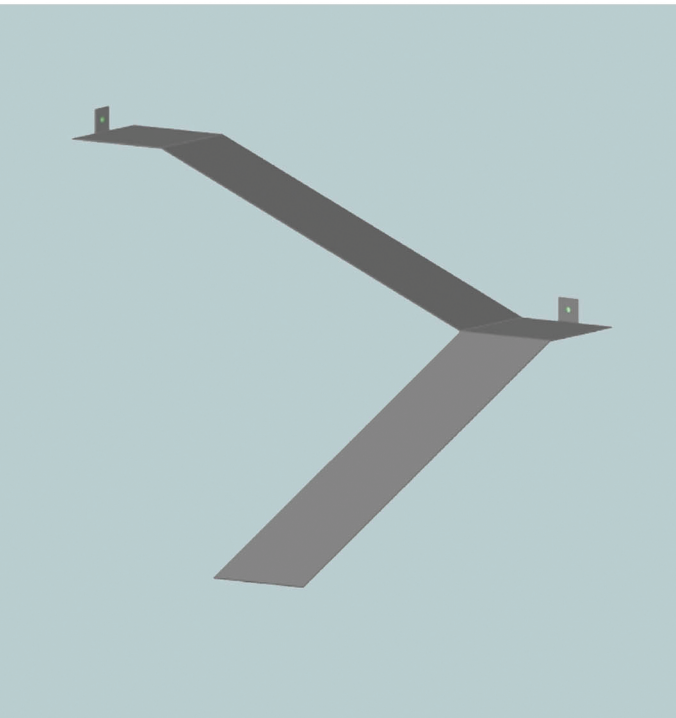
a =eccentricity

Key Components

DTI Bolting Method for Transverse Beams



Fencing + Dibond Reflector Kits + Animal Escape Ramps



Contact us today for a quote or use our quick online calculator tool

www.triangleltd.co.uk

info@triangleltd.co.uk

01425 656 466

